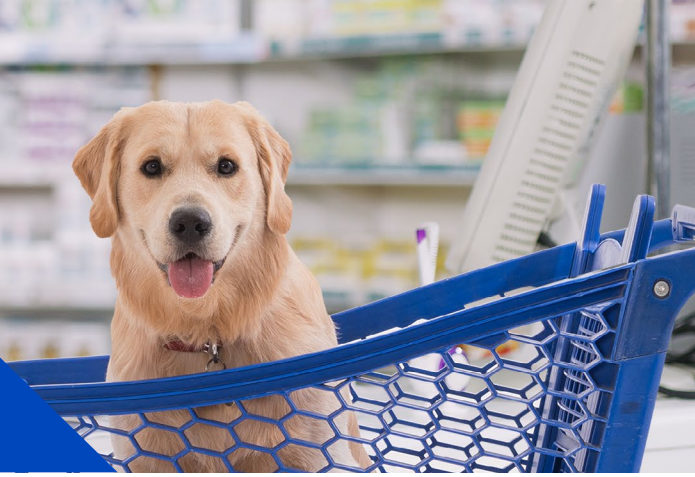


# Nationwide<sup>®</sup> PetRxExpress<sup>SM</sup>



Save time and money when filling pet prescriptions at a Walmart or Sam's Club pharmacy with Nationwide<sup>®</sup> **PetRxExpress<sup>SM</sup>**.

For no extra cost, our pet insurance members get discounts on Walmart's already low prices while enjoying the effortless convenience of automatic claim submission.

## How it works

Using Nationwide<sup>®</sup> **PetRxExpress<sup>SM</sup>** is easy and convenient for Nationwide pet insurance members.

1. Download a digital pet insurance card at [my.petinsurance.com](https://my.petinsurance.com).
2. Take a prescription to any in-store Walmart or Sam's Club pharmacy, or have the vet call it in.
3. Show the pet insurance card at the checkout and pay for the prescription.

That's it! The pharmacy will automatically submit a claim to Nationwide for processing, and you will be reimbursed for eligible expenses.\*

\*Reimbursement or co-insurance is based on coverage detailed in policy. See Nationwide **PetRxExpress<sup>SM</sup>** Terms of Service. Certain coverages may be excluded due to pre-existing conditions. See policy documents for a complete list of exclusions.

## Get prescription pet meds for less



- Optional program available to all active Nationwide pet insurance members
- Receive discounted pricing on medications not covered by pet insurance
- No cost to use

\*Some exclusions may apply. Certain coverages may be excluded due to pre-existing conditions. See policy documents for a complete list of exclusions. Plans may not be available in all states. Policy eligibility may vary.

Products underwritten by Veterinary Pet Insurance Company (CA), Columbus, OH; National Casualty Company (all other states), Columbus, OH. Agency of Record: DVM Insurance Agency. All are subsidiaries of Nationwide Mutual Insurance Company. Subject to underwriting guidelines, review and approval. Products and discounts not available to all persons in all states. Insurance terms, definitions and explanations are intended for informational purposes only and do not in any way replace or modify the definitions and information contained in individual insurance contracts, policies or declaration pages, which are controlling. Nationwide, the Nationwide N and Eagle, and Nationwide is on your side are service marks of Nationwide Mutual Insurance Company. Third party marks are the property of their respective owners. ©2021 Nationwide. 21GRP8476\_EMP\_ADA



**Nationwide<sup>®</sup>**