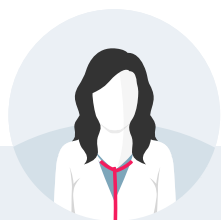




Vitality GP

Speak to a Vitality GP about your health concerns, book a Face-to-Face appointment or access the Health Advice Line



Vitality Face-to-Face GP

All the benefits of seeing a GP in person, with none of the wait.

As a Vitality member, you can book at least two Face-to-Face GP consultations each plan year¹. Available in a variety of locations including London, Birmingham, Glasgow, Manchester, South East England and St Albans. Appointments are available to all Vitality Health members, and can be easily accessed for a reduced up-front fee of £20 per consultation.



Vitality GP

The Vitality GP app gives you quick and convenient access to a GP via a video consultation where you can speak to a doctor about any aspect of your health.

You can also discuss possible referrals for onward care, when clinically appropriate. Get instant private digital prescriptions to collect from a pharmacy of your choice, or get delivered to your home.



Health Advice Line

Speak to a healthcare professional anytime, day or night.

The Health Advice Line is a hotline for 24-hour medical advice from a clinical advisor.

You can call if you're feeling unwell, need some medical advice, or you're unsure if you should visit a GP: 0345 279 8856 or 0345 602 3523 if you live in the Isle of Man or the Channel Islands.



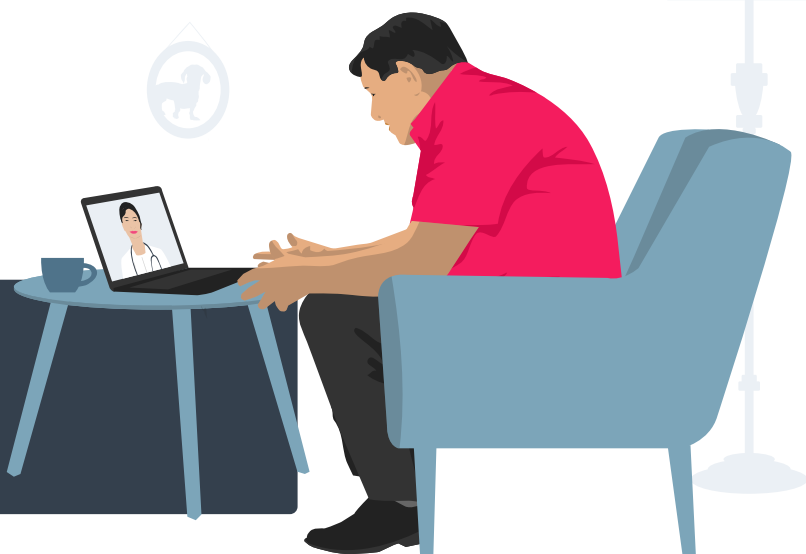
Download the Vitality GP



App store



On Android



1. The number of appointments available is based on your hospital list option. If your employer has selected London Care, then you will have access to unlimited face-to-face GP appointments, otherwise you will have access to two face-to-face GP appointments each plan year. You can check which hospital list option you have in the Vitality Member app or in Member Zone. Terms and conditions apply. Details correct as May 2024.